

An Economic Profile of Hancock and Washington Counties

Charles S. Colgan

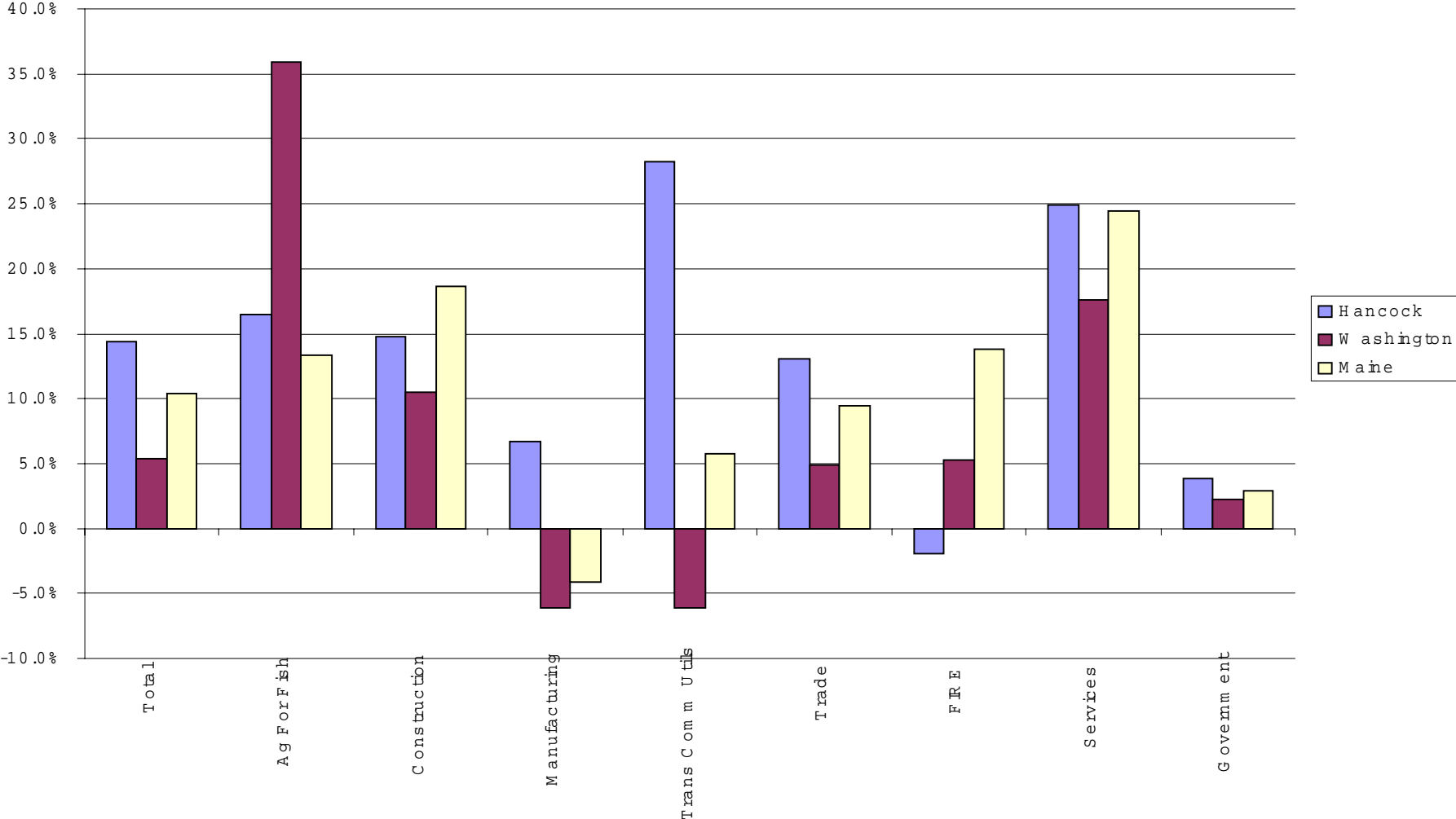
Professor of Public Policy and Management

Edmund S. Muskie School of Public Service

University of Southern Maine

Hancock County employment growth has exceeded that of Maine, while Washington County's has lagged. Washington County exceeded statewide growth rates only in Agriculture-Forestry-Fishing. Hancock County exceed statewide growth rates in the critical trade and services sectors. Washington county lost employment in manufacturing at a slightly faster rate than the state.

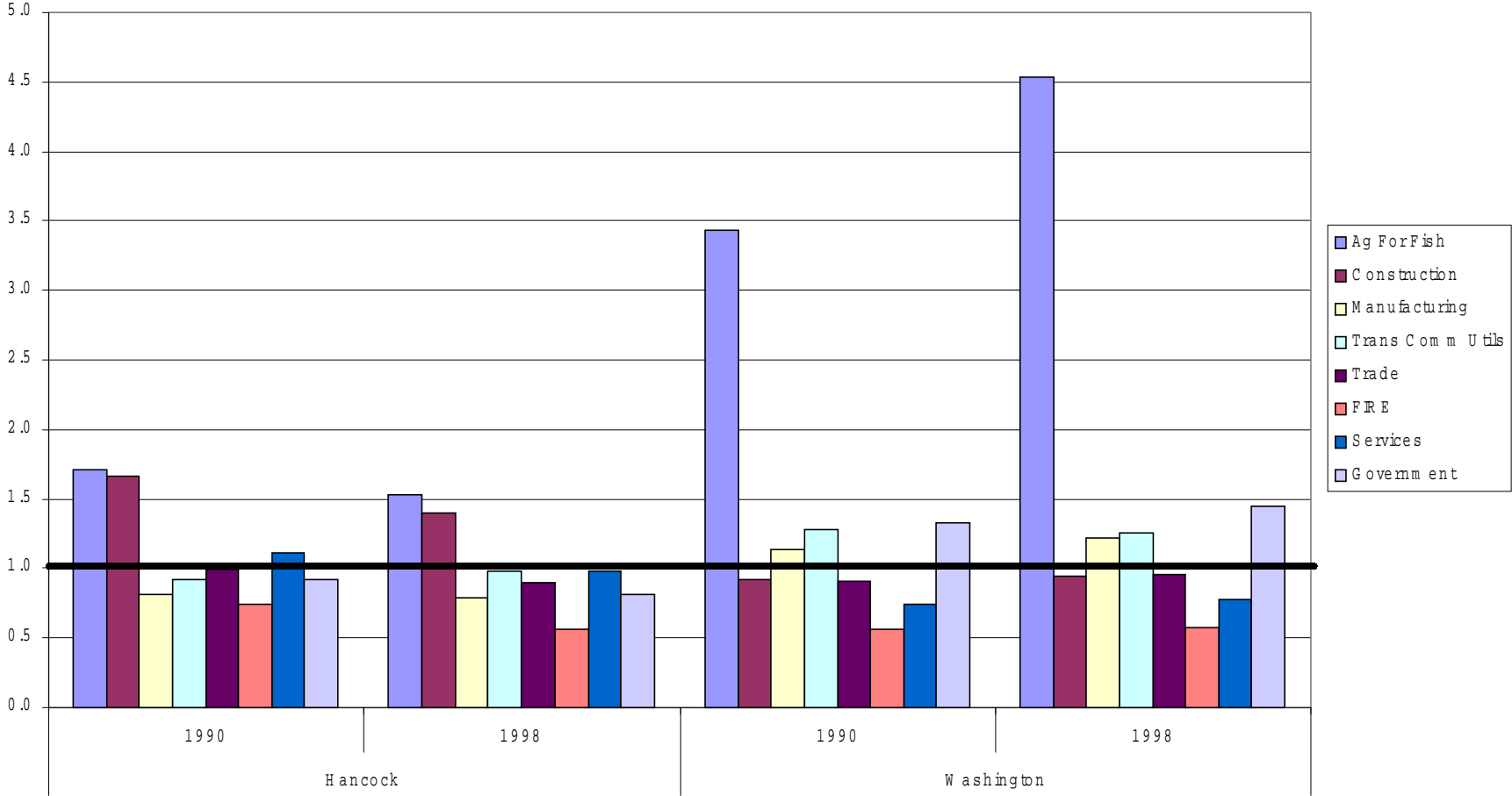
Emp loym entby Industry 1990-1998



Using a measure of economic specialization which measures a region as more specialized in an industry if the score is greater than 1 and less specialized if the score is less than 1, Washington county is very specialized in the Agriculture-Forestry-Fisheries sector and this specialization has increased from 1990-1998. Hancock county is also specialized in this sector, but has more diversified economy. Washington county is also more dependent on government employment than Hancock county.

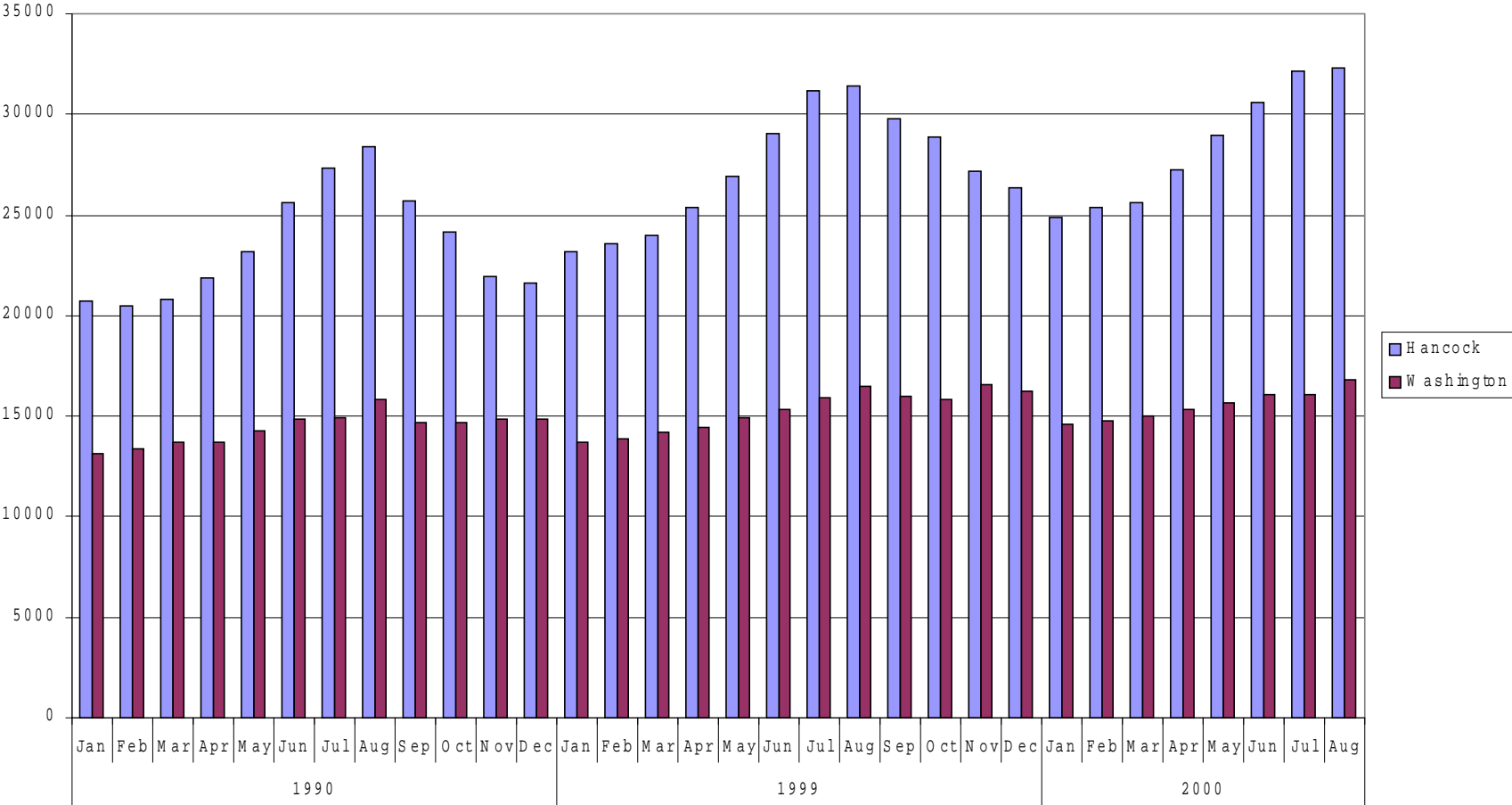
Industry Specialization

(>1 more specialized than Maine <1 less specialized than Maine)



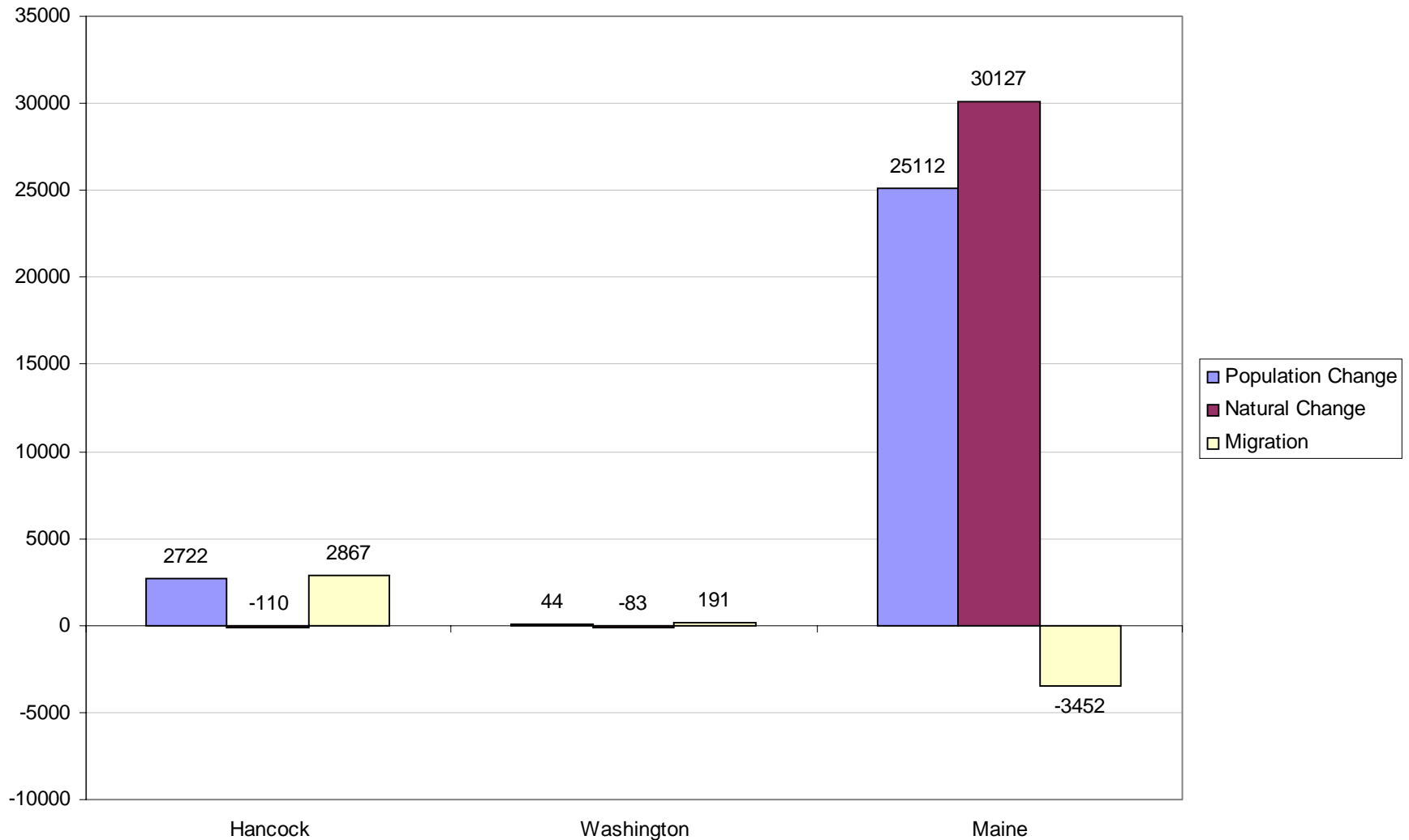
Hancock county's employment growth advantage over Washington county derives in part from strong seasonal employment growth in the period from May to October.

Resident Employment

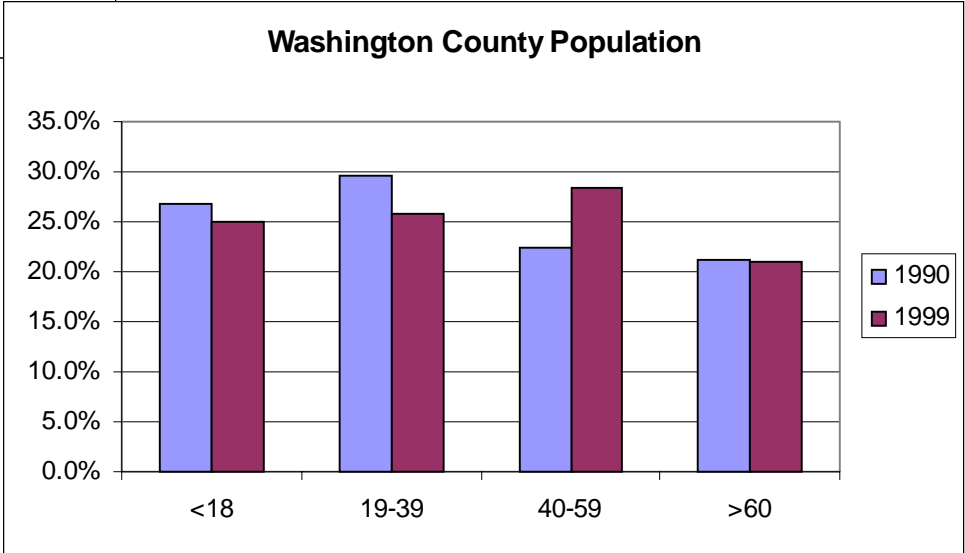
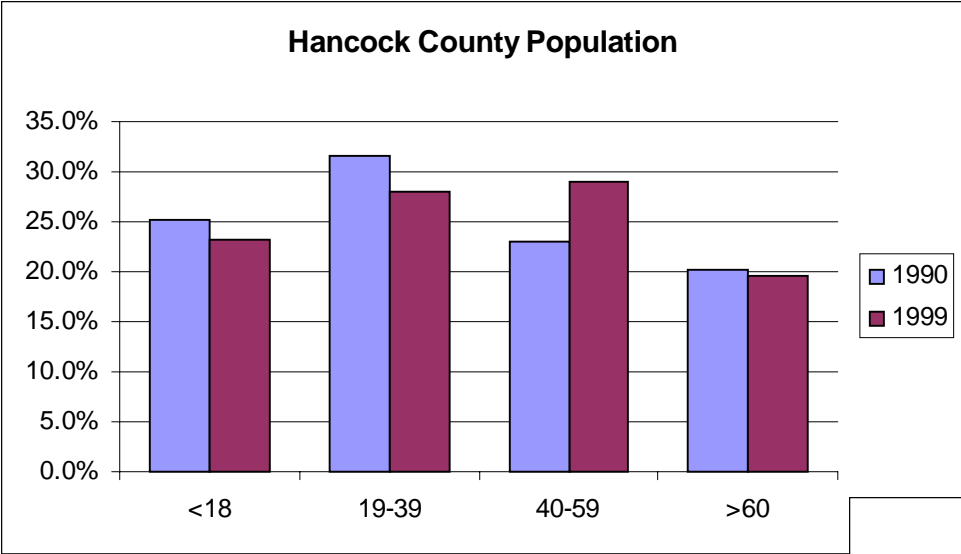


Hancock and Washington counties both saw natural population declines (deaths>births). Both counties showed population growth only because of in-migration, but Hancock County's population growth is two orders of magnitude larger than Washington county's growth.

Population Change 1990-1999

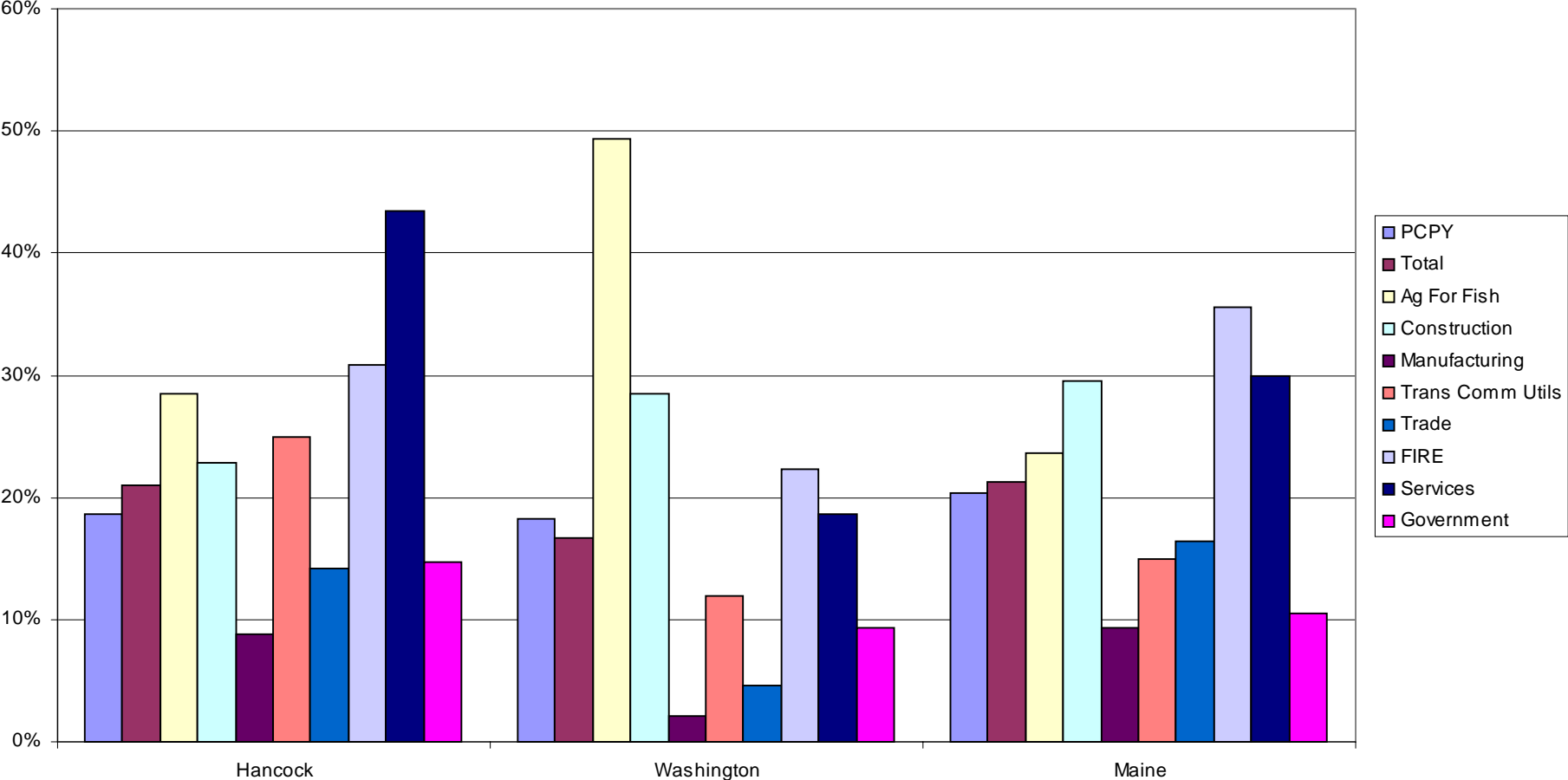


Both Hancock and Washington counties are getting older. The number of young people is declining, and those aged 40-59 now constitute the largest share of the population. The share of the population over 60 is slightly higher in Washington county.



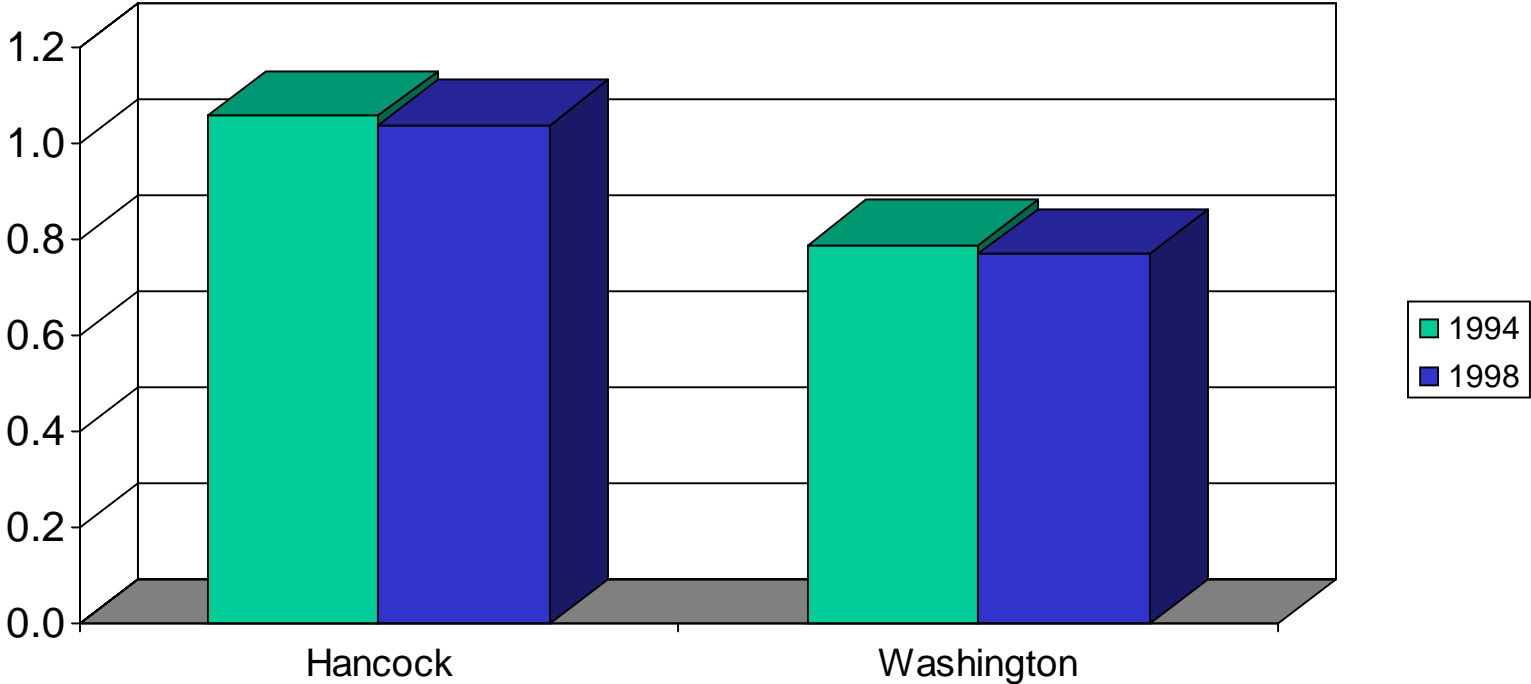
Both Hancock and Washington lagged Maine in per capita personal income growth. The service sector was the fastest growing source of income in Hancock county, while agriculture-forestry-fisheries was fastest growing in Washington county. Finance, insurance, and real estate was fastest growing in the state.

Personal Income 1994-1998



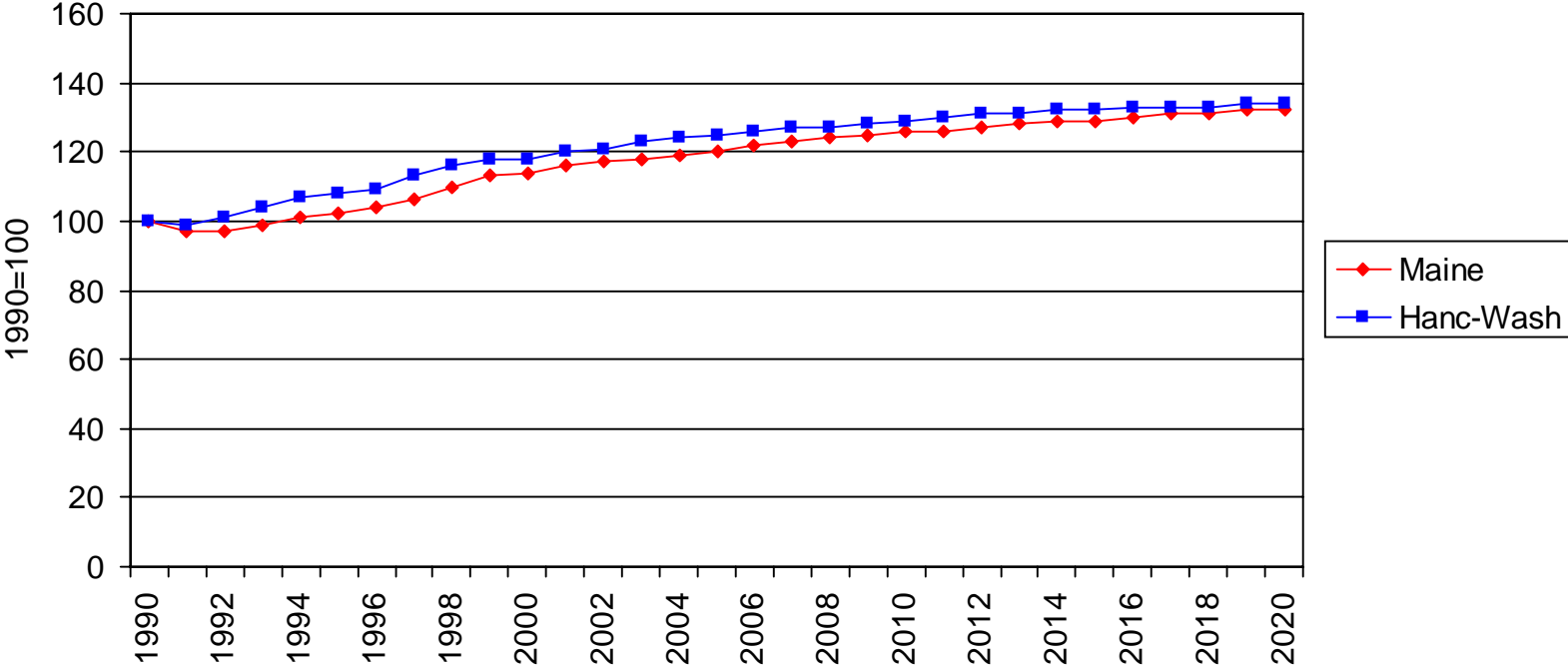
Hancock county's per capita personal income is slightly higher than the statewide per capita personal income, while Washington county's lags significantly behind. Both counties slightly lost ground relative to the state between 1990 and 1998.

Ratio of County to Maine Per Capital Personal Income



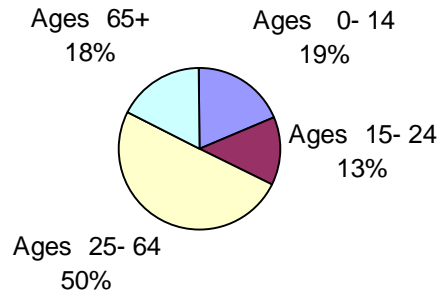
The Hancock-Washington region has slightly exceeded the state in employment growth during the past decade, primarily due to strong growth in Hancock county. This advantage will continue, but steadily diminish over the next two decades as weak labor force growth and a shift towards growth in more urban regions limits the region's advantage.

Forecast Employment Growth

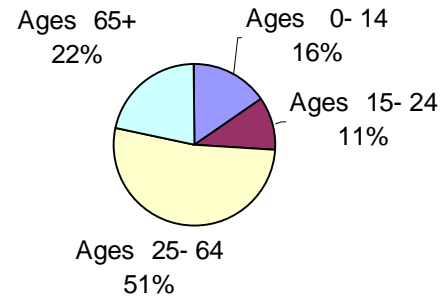


The younger population in the two populations will decline significantly over the next twenty years because of declining birth rates. The problem will be more significant in Washington county because of the lack of in-migration. The decline in the young population will be offset in proportional terms by growth in population over 65.

Hancock and Washington Counties Population
1990



Hancock and Washington Counties Population
2020



Hancock and Washington Counties
Change in Population 1990-2020

